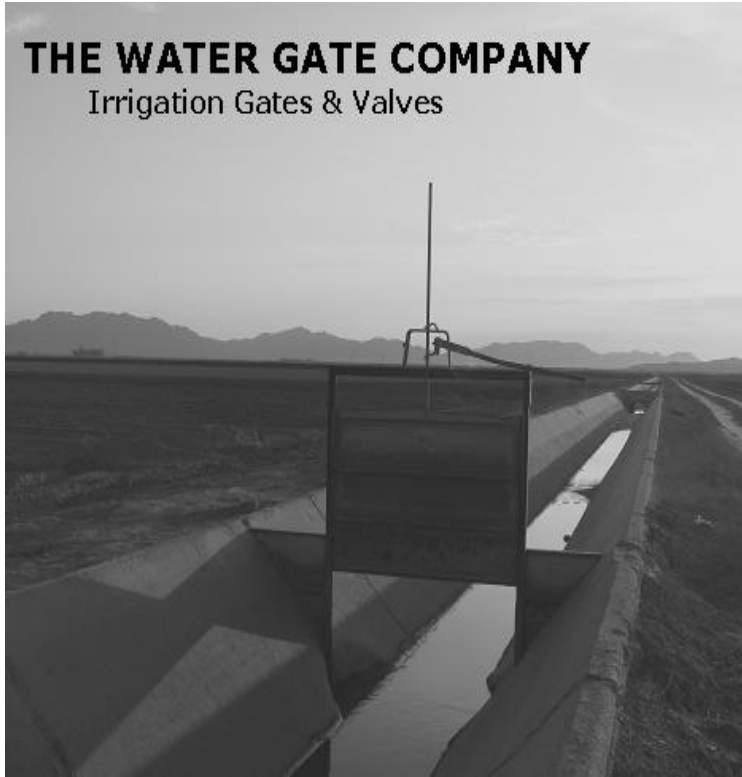


**THE WATER GATE COMPANY**  
Irrigation Gates & Valves

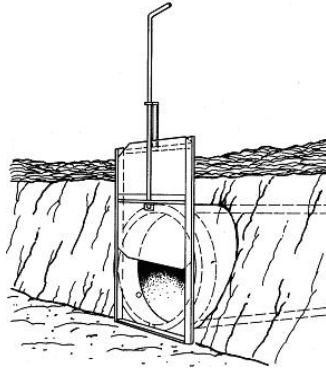


631 East Heil Avenue  
El Centro, CA 92243

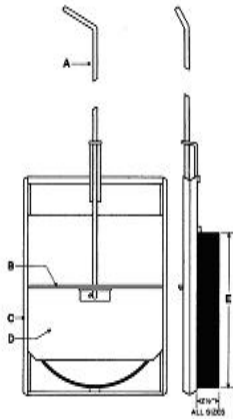
Phone Number: (760) 353-0099  
Toll Free (800) 961-0884  
Fax Number (760) 353-3908

# 100 SERIES PORT VALVES

Used with concrete, corrugated metal pipe, steel or asbestos pipe. May be used as check or diversion gates in small concrete ditches, or in reservoirs or storage ponds as outlet gates. The steel ring has three  $\hat{A}1/4$ " x  $\hat{A}3/4$ " sheet metal screws that can be used to lock the valve to the pipe, thus allowing it to be quickly cemented into place. The "cam lock" closure provides secure and accurate flow control. The 100 Series Port Valve, from 6" thru 24" diameter, with its wide ring and lock screws make it an affordable alternative to more costly valves designed for the same application.



SIZE	FRAME	LID	CROSSBAR	HANDLE
6"	30106	30906	30006	30001
8"	30108	30908	30008	30001
10"	30110	30910	30010	30001
12"	30112	30912	30012	30001
14"	30114	30914	30014	30001
15"	30115	30915	30015	30001
16"	30116	30916	30016	30001
18"	30118	30918	30018	30002
20"	30120	30920	30020	30002
21"	30121	30921	30021	30002
24"	30124	30924	30024	30002



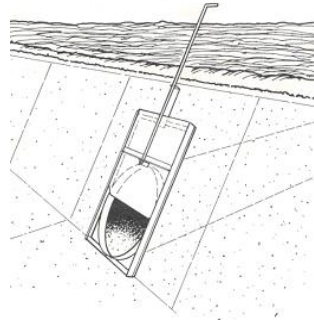
ALL PARTS ARE SOLD AND INVOICED AS UN-

ASSEMBLED PARTS AND PRICES ARE SUBJECT TO CHANGE WITHOUT NOTICE

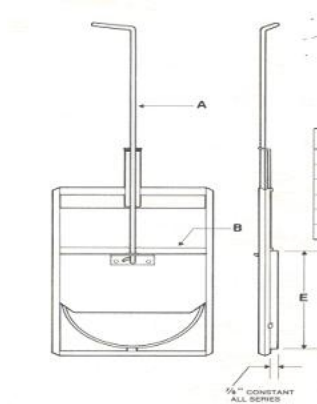
A= HANDLE  
 B=CROSSBAR  
 C=FRAME  
 D=LID  
 E=VALVE SIZE -1/2"  
 ALL RINGS ARE 3" WIDE

## 500 SERIES PORT VALVES

Adjustable flow control port valves for concrete lined ditches. The lid can be quickly locked in any position for accurate flow control with a "camlock" closure. This valve has been designed and constructed to make installations a fast and simple task. The 500 Series Port Valves are very popular and widely used in most Southwestern states on all kinds of farm irrigation systems. These valves are very reliable and will take an enormous amount of abuse. There have been no changes made in the design of these valves since their development over 40 years ago. Today they are still one of the most affordable products on the market for their application.



SIZE	FRAME	LID	CROSSBAR	HANDLE
6"	30506	30906	30006	30003
8"	30508	30908	30008	30003
10"	30510	30910	30010	30003
12"	30512	30912	30012	30003
14"	30514	30914	30014	30003
16"	30516	30916	30016	30003

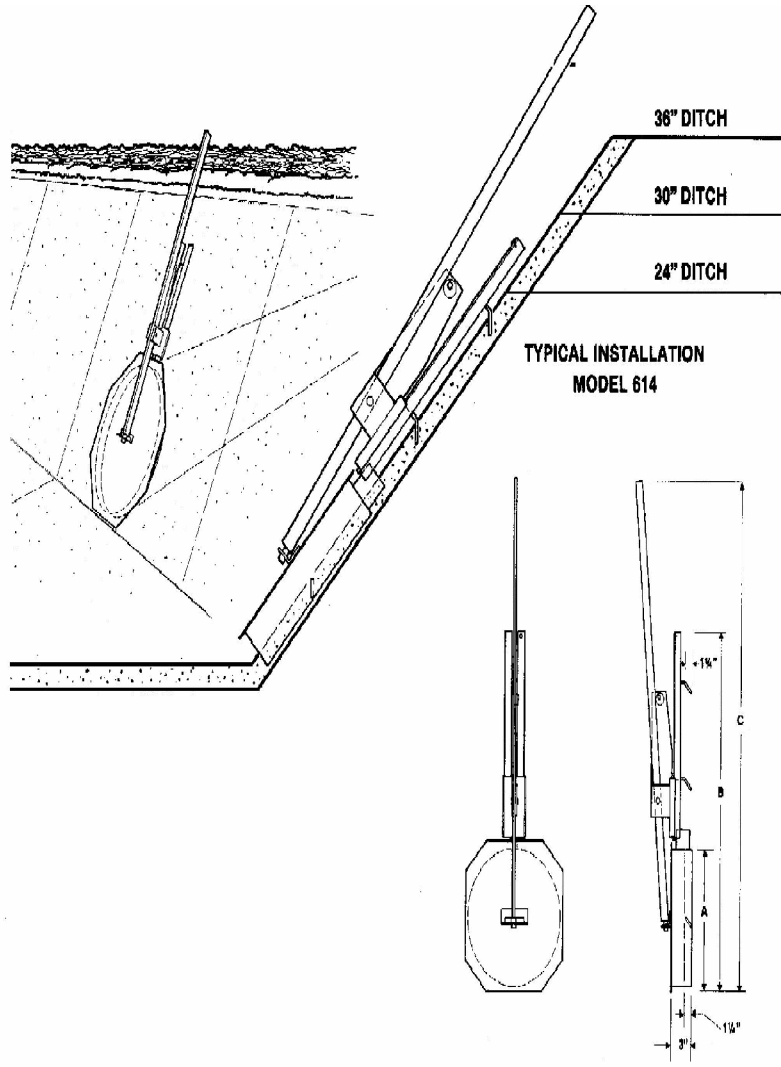


ALL PARTS ARE SOLD AND INVOICED AS  
UNASSEMBLED  
PARTS AND PRICES ARE SUBJECT TO CHANGE  
WITHOUT NOTICE

A= HANDLE  
B=CROSSBAR  
C=FRAME  
D=LID

ALL RINGS ARE 1 1/2" WIDE

# 600 SERIES PORT VALVES



### WITH SOME IMPORTANT NEW FEATURES

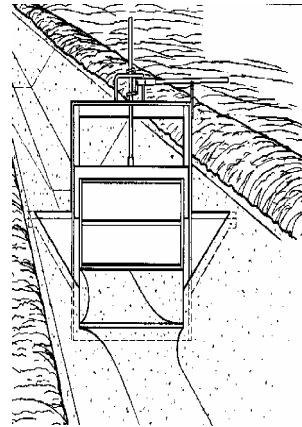
- ADJUST-A-LOCK Lid  
Lid tension is fully adjustable while the valve is in service allowing you to set the proper seal pressure and accurate flow control.
- MONORAIL SLIDE  
Super smooth operation with enough clearance to resist build-ups.
- SURE SEAL Gaskets  
Leak proof closure (delete gasket option; port ring is precision ground for accurate metal to metal seating).
- QUALITY MATERIALS  
Zinc plated frame, slide and handle; galvanized lid and stainless steel hardware. Handle may be lengthened or shortened at the factory by special order or in the field by the customer. A stainless steel lid is optional and will be quoted upon request.
- EASY INSTALLATION  
Even with inexperienced help. "Sure Set Depth Gauge Anchors" make installation foolproof.

Part #	Model	A	B	C	LID
30610	610	10"	32"	47"	18 GA. GALV.
30612	612	12"	34"	49"	18 GA. GALV.
30614	614	14"	36"	51"	18 GA. GALV.
30616	616	16"	38"	53"	18 GA. GALV.

## 712 SERIES HEADGATE

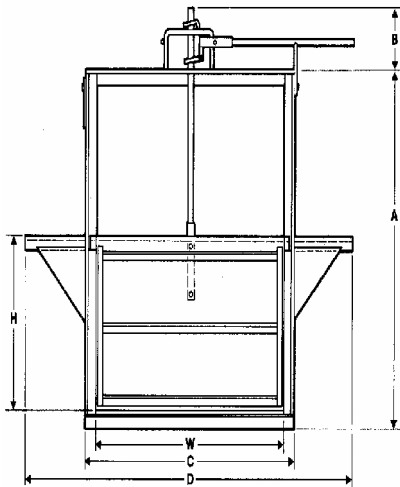
**712 SERIES INDICATES  
12" BOTTOM CONCRETE LINED DITCHES  
WITH A STANDARD 1: 1 SLOPE**

- **RUGGED STRUCTURAL STEEL**  
Frames and heavy reinforced slides insure long trouble-free service.
- **DURABLE JACKLIFTS**  
Are designed for fast, easy flow control.
- **MOLDED RUBBER GASKETS**  
From a watertight seal between the frame and the slide.
- **ALL PARTS ARE SPECIALLY TREATED**  
To resist rust and corrosion we use a special coating on the frame and all imbedded steel components while the slides and miscellaneous hardware are either hot dipped galvanized or zinc plated.
- **SPECIAL SIZES AND FINISHES**  
Many options are available and we will be happy to quote you on request.



PART #	MODEL #	OPENING		DIMENSIONS			
		W	H	A	B	C	D
31322	712-3622	36	22	46 <sup>3</sup> / <sub>4</sub>	9	39 <sup>1</sup> / <sub>2</sub>	64
31324	712-3624	36	24	50 <sup>3</sup> / <sub>4</sub>	9	39 <sup>1</sup> / <sub>2</sub>	68
31326	712-3626	36	26	54 <sup>3</sup> / <sub>4</sub>	9	39 <sup>1</sup> / <sub>2</sub>	72
31328	712-3628	36	28	58 <sup>3</sup> / <sub>4</sub>	9	39 <sup>1</sup> / <sub>2</sub>	76
31330	712-3630	36	30	62 <sup>3</sup> / <sub>4</sub>	9	39 <sup>1</sup> / <sub>2</sub>	80
31332	712-3632	36	32	66 <sup>3</sup> / <sub>4</sub>	9	39 <sup>1</sup> / <sub>2</sub>	84
31334	712-3634	36	34	70 <sup>3</sup> / <sub>4</sub>	9	39 <sup>1</sup> / <sub>2</sub>	88
31336	712-3636	36	36	74 <sup>3</sup> / <sub>4</sub>	9	39 <sup>1</sup> / <sub>2</sub>	92
31338	712-3638	36	38	78 <sup>3</sup> / <sub>4</sub>	9	39 <sup>1</sup> / <sub>2</sub>	96

**Custom sizes are available upon request.**



If you have any special needs please feel free to give us a call and we will be glad to discuss them with you.

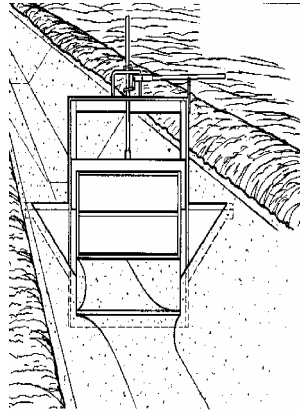
We have manufactured this style of gates in more variations than you can possibly imagine, from the standard you are mostly familiar to completely hot dipped galvanized, to completely stainless steel.

Give us a call at 800-951-0884 toll free and we will talk over your particular needs.

# 724 SERIES HEADGATE

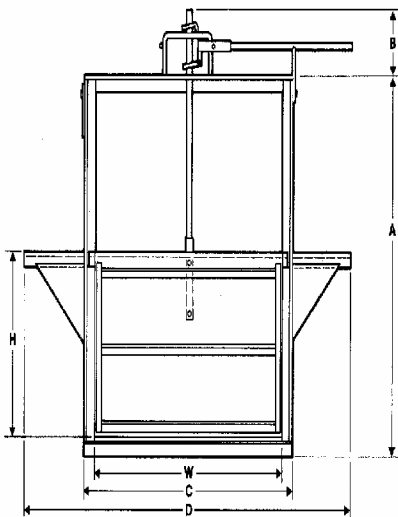
**724 SERIES INDICATES  
24" BOTTOM CONCRETE LINED DITCHES  
WITH A STANDARD 1: 1 SLOPE**

- **RUGGED STRUCTURAL STEEL**  
Frames and heavy reinforced slides insure long trouble-free service.
- **DURABLE JACKLIFTS**  
Are designed for fast, easy flow control.
- **MOLDED RUBBER GASKETS**  
From a watertight seal between the frame and the slide.
- **ALL PARTS ARE SPECIALLY TREATED**  
To resist rust and corrosion we use a special coating on the frame and all imbedded steel components while the slides and miscellaneous hardware are either hot dipped galvanized or zinc plated.
- **SPECIAL SIZES AND FINISHES**  
Many options are available and we will be happy to quote you on request.



PART #	MODEL #	OPENING		DIMENSIONS			
		W	H	A	B	C	D
31424	724-4624	46	24	50 <sup>3</sup> / <sub>4</sub>	9	49 <sup>1</sup> / <sub>2</sub>	80
31426	724-4626	46	26	54 <sup>3</sup> / <sub>4</sub>	9	49 <sup>1</sup> / <sub>2</sub>	84
31428	724-4628	46	28	58 <sup>3</sup> / <sub>4</sub>	9	49 <sup>1</sup> / <sub>2</sub>	88
31430	724-4630	46	30	62 <sup>3</sup> / <sub>4</sub>	9	49 <sup>1</sup> / <sub>2</sub>	92
31432	724-4632	46	32	66 <sup>3</sup> / <sub>4</sub>	9	49 <sup>1</sup> / <sub>2</sub>	96
31434	724-4634	46	34	70 <sup>3</sup> / <sub>4</sub>	9	49 <sup>1</sup> / <sub>2</sub>	100
31436	724-4636	46	36	74 <sup>3</sup> / <sub>4</sub>	9	49 <sup>1</sup> / <sub>2</sub>	104
31438	724-4638	46	38	78 <sup>3</sup> / <sub>4</sub>	9	49 <sup>1</sup> / <sub>2</sub>	108

**Custom sizes are available upon request.**



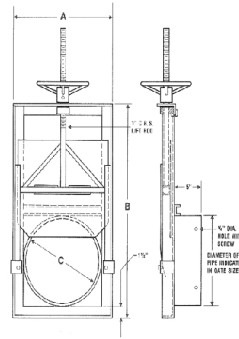
If you have any special needs please feel free to give us a call and we will be glad to discuss them with you.

We have manufactured this style of gates in more variations than you can possibly imagine, from the standard you are mostly familiar to completely hot dipped galvanized, to completely stainless steel.

Give us a call at 800-951-0884 toll free and we will talk over your particular needs.

## 800 SERIES HEADGATE

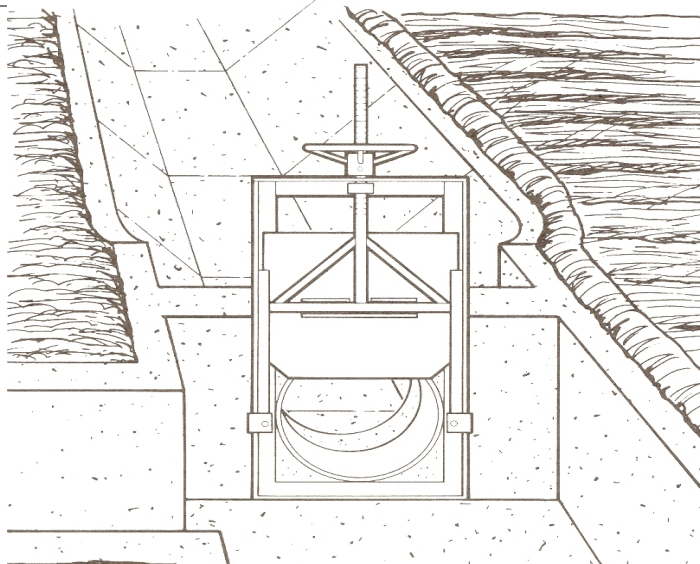
Ideal for diversion boxes and standpipes. Frequently used in ponds and reservoirs as outlets. Equipped with either a screw lift mechanism, with a 18" diameter hand wheel, or a jacklift mechanism. Has a wide 1/8" plate ring to slip inside of concrete, corrugated and most other types pf pipe. Leak proof closure with smooth galvanized slide and ground ring. Frame is coated with a waterproof coating, all other parts are galvanized or zinc plated. The entire unit can be hot dipped galvanized and will be quoted on request. Additional frame height in 1-foot increments available at \$ 18.40/ ft. Please allow a minimum of 5 working days for manufacture.



Custom sizes are available upon request.

SCREWLIFT			JACKLIFT		
PART #	SIZE	WEIGHT (LBS)	PART #	SIZE	WEIGHT (LBS)
33122	12"	55	32121	12"	64
33142	14"	61	32141	14"	70
33152	15"	54	32151	15"	73
33162	16"	67	32161	16"	77
33182	18"	76	32181	18"	84
33202	20"	85	32201	20"	88
33212	21"	89	32211	21"	98
33242	24"	96	32241	24"	405
33302	30"	452	32301	30"	161

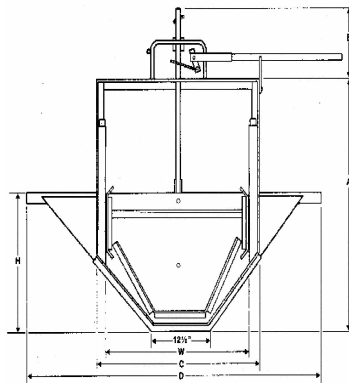
MODEL & SIZE	MAX. HEAD IN FEET	A	B	C	PART NUMBER
812	7	141/2"	36"	111/2"	33122 & 32121
814	6.5	161/2"	38"	131/2"	33142 & 32141
815	6.25	171/2"	39"	141/2"	33152 & 32151
816	6	181/2"	40"	151/2"	33162 & 32161
818	5.75	201/2"	48"	171/2"	33182 & 32181
820	5.5	221/2"	50"	191/2"	33201 & 32201
821	5.25	231/2"	52"	201/2"	33212 & 32211
824	5	261/2"	58"	231/2"	33241 & 32421
830	5	321/2"	70"	291/2"	33302 & 32301



## **912 SERIES HEADGATE**

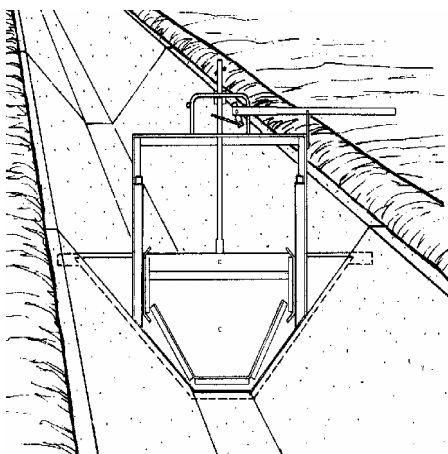
**912 SERIES INDICATES  
12" BOTTOM CONCRETE LINED DITCHES  
WITH A STANDARD 1: 1 SLOPE**

- **RUGGED STRUCTURAL STEEL**  
Frames and heavy reinforced slides insure long trouble-free service.
- **DURABLE JACKLIFTS**  
Are designed for fast, easy flow control.
- **MOLDED RUBBER GASKETS**  
From a watertight seal between the frame and the slide.
- **ALL PARTS ARE SPECIALLY TREATED**  
To resist rust and corrosion we use a special coating on the frame and all imbedded steel components while the slides and miscellaneous hardware are either hot dipped galvanized or zinc plated.
- **SPECIAL SIZES AND FINISHES**  
Many options are available and we will be happy to quote you on request.



PART #	MODEL #	OPENING		DIMENSIONS			
		W	H	A	B	C	D
34620	912-3620	36	20	43	9	39 <sup>3</sup> / <sub>8</sub>	60
34622	912-3622	36	22	47	9	39 <sup>3</sup> / <sub>8</sub>	64
34224	912-4224	42	24	51	9	45 <sup>3</sup> / <sub>8</sub>	68
34226	912-4226	42	26	55	9	45 <sup>3</sup> / <sub>8</sub>	72
34228	912-4228	42	28	59	9	45 <sup>3</sup> / <sub>8</sub>	76
34230	912-4230	42	30	63	9	45 <sup>3</sup> / <sub>8</sub>	80
34232	912-4232	42	32	67	9	45 <sup>3</sup> / <sub>8</sub>	84
34234	912-4234	42	34	71	9	45 <sup>3</sup> / <sub>8</sub>	88

**Custom sizes are available upon request.**



If you have any special needs please feel free to give us a call and we will be glad to discuss them with you.

We have manufactured this style of gates in more variations than you can possibly imagine, from the standard you are mostly familiar to completely hot dipped galvanized, to completely stainless steel.

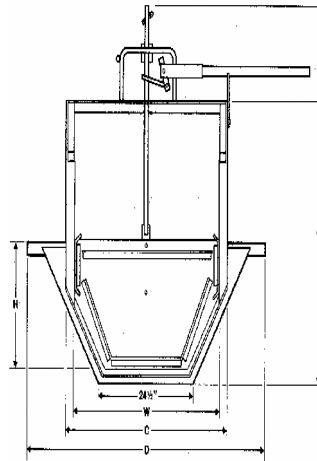
Give us a call at 800-951-0884 toll free and we will talk over your particular needs.



# **924 SERIES HEADGATE**

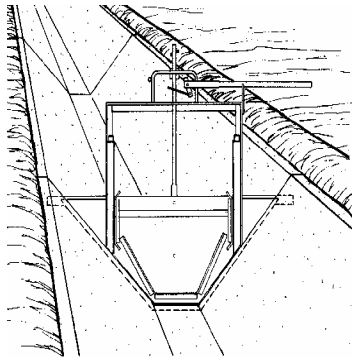
**924 SERIES INDICATES  
24" BOTTOM CONCRETE LINED DITCHES  
WITH A STANDARD 1: 1 SLOPE**

- **RUGGED STRUCTURAL STEEL**  
Frames and heavy reinforced slides insure long trouble-free service.
- **DURABLE JACKLIFTS**  
Are designed for fast, easy flow control.
- **MOLDED RUBBER GASKETS**  
From a watertight seal between the frame and the slide.
- **ALL PARTS ARE SPECIALLY TREATED**  
To resist rust and corrosion we use A special coating on the frame and all imbedded steel components while the slides and miscellaneous hardware are either hot dipped galvanized or zinc plated.
- **SPECIAL SIZES AND FINISHES**  
Many options are available and we will be happy to quote you on request.



PART #	MODEL #	OPENING		DIMENSIONS			
		W	H	A	B	C	D
35822	924-4822	48	22	47	9	51 <sup>1</sup> / <sub>2</sub>	76
35824	924-4824	48	24	51	9	51 <sup>1</sup> / <sub>2</sub>	80
35426	924-5426	54	26	55	9	57 <sup>1</sup> / <sub>2</sub>	84
35428	924-5428	54	28	59	9	57 <sup>1</sup> / <sub>2</sub>	88
35430	924-5430	54	30	63	9	57 <sup>1</sup> / <sub>2</sub>	92
35432	924-5432	54	32	67	9	57 <sup>1</sup> / <sub>2</sub>	96
35434	924-5434	54	34	71	9	57 <sup>1</sup> / <sub>2</sub>	100

**Custom sizes are available upon request.**



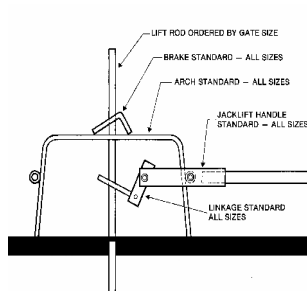
If you have any special needs please feel free to give us a call and we will be glad to discuss them with you.

We have manufactured this style of gates in more variations than you can possibly imagine, from the standard you are mostly familiar to completely hot dipped galvanized, to completely stainless steel.

Give us a call at 800-951-0884 toll free and we will talk over your particular needs.

# RUBBER AND LIFT MECHANISM PARTS

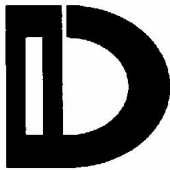
PART NUMBER	DESCRIPTION
31101	ARCH
31102	LINKAGE
31103	BREAK
31104	HANDLE
31105	HANDLE LOCK



HEAVY DUTY SIDE GASKET  
 USED FOR HEAVY DUTY CUSTOM  
SOLD IN 12" LENGTHS ONLY  
 NO. 3203



BOTTOM GASKET  
 USED ON ALL SERIES OF HEADGATES



SIDE GASKET STANDARD  
 USED ON ALL STANDARD  
 SERIES GATES 700 THROUGH 924  
SOLD IN 12" LENGTHS ONLY

PART NUMBER	DESCRIPTION
3201	BOTTOM GASKET 1" x $\frac{5}{8}$ "
3202	DITCH CHECK $\frac{1}{8}$ " x 2"
3203	HD SIDE GASKET
3204	SIDE GASKET

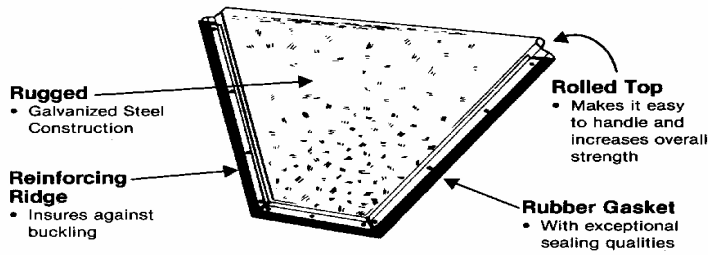
# DITCH CHECKS

## 12" BOTTOM

PART NUMBER	DESCRIPTION		PART NUMBER	DESCRIPTION
41010	SR 10 x 12" BOTTOM/RUBBER		40010	SM 10 x 12" BOTTOM/RUBBER
41012	SR 12 x 12" BOTTOM/RUBBER		40012	SM 12 x 12" BOTTOM/RUBBER
41014	SR 14 x 12" BOTTOM/RUBBER		40014	SM 14 x 12" BOTTOM/RUBBER
41016	SR 16 x 12" BOTTOM/RUBBER		40016	SM 16 x 12" BOTTOM/RUBBER
41018	SR 18 x 12" BOTTOM/RUBBER		40018	SM 18 x 12" BOTTOM/RUBBER
41020	SR 20 x 12" BOTTOM/RUBBER		40020	SM 18 x 12" BOTTOM/RUBBER
41022	SR 22 x 12" BOTTOM/RUBBER		40022	SM 22 x 12" BOTTOM/RUBBER
41024	SR 24 x 12" BOTTOM/RUBBER		40024	SM 24 x 12" BOTTOM/RUBBER
41026	SR 26 x 12" BOTTOM/RUBBER		40026	SM 26 x 12" BOTTOM/RUBBER
41028	SR 28 x 12" BOTTOM/RUBBER		40028	SM 28 x 12" BOTTOM/RUBBER
41030	SR 30 x 12" BOTTOM/RUBBER		40030	SM 30 x 12" BOTTOM/RUBBER

## 24" BOTTOM

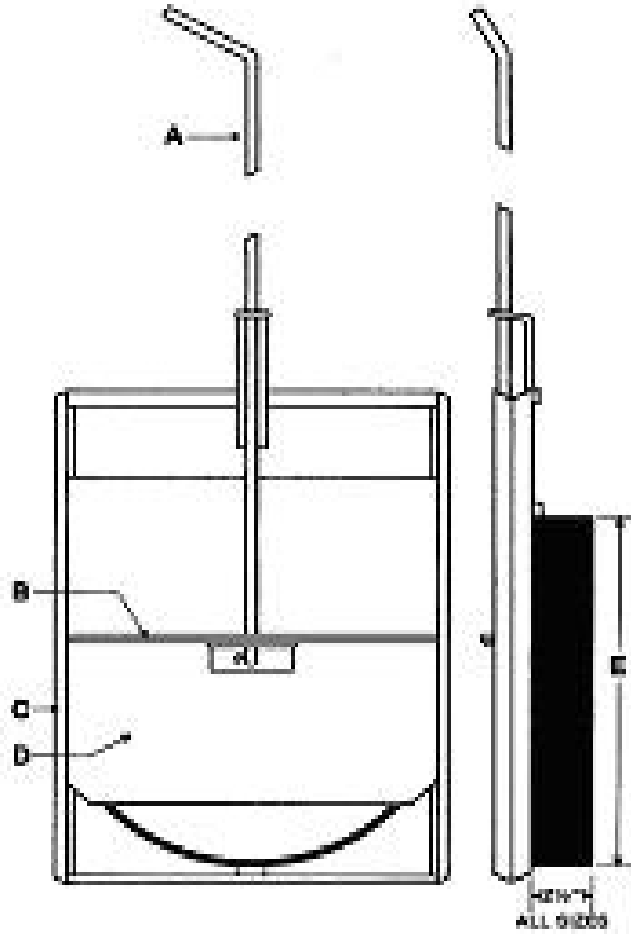
PART NUMBER	DESCRIPTION		PART NUMBER	DESCRIPTION
43022	SR 22 x 24" BOTTOM/RUBBER		42022	SM 22 x 24" BOTTOM/RUBBER
43024	SR 24 x 24" BOTTOM/RUBBER		42024	SM 24 x 24" BOTTOM/RUBBER
43026	SR 26 x 24" BOTTOM/RUBBER		42026	SM 26 x 24" BOTTOM/RUBBER
43028	SR 28 x 24" BOTTOM/RUBBER		42028	SM 28 x 24" BOTTOM/RUBBER
43030	SR 30 x 24" BOTTOM/RUBBER		42030	SM 30 x 24" BOTTOM/RUBBER



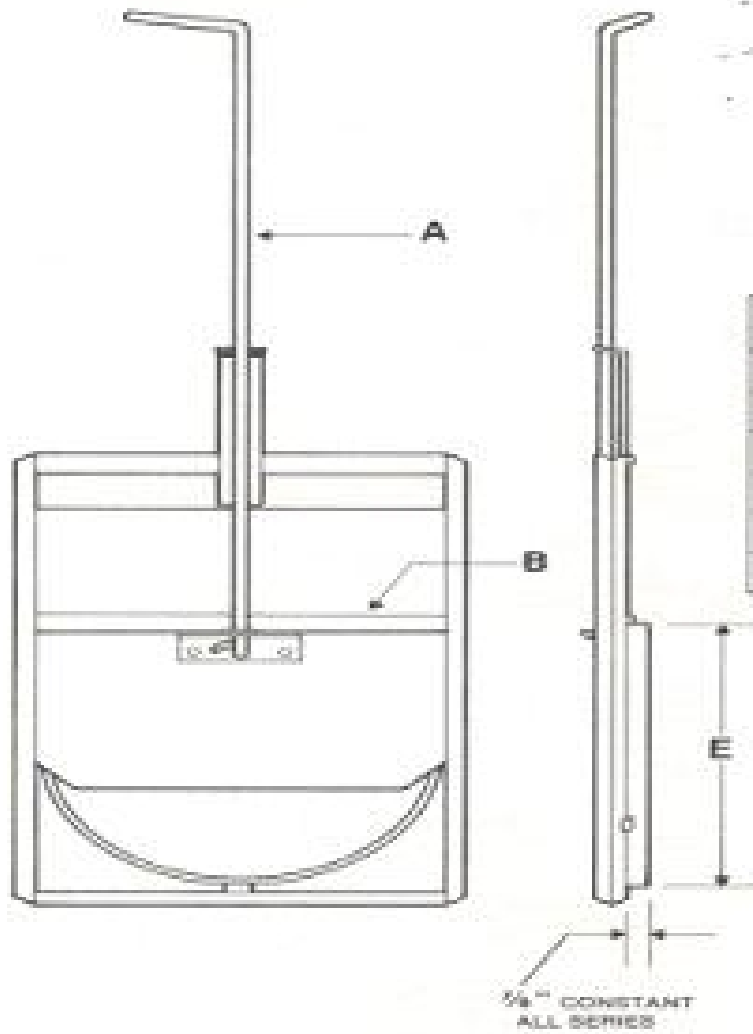
*Stays Put . . . Where Put!*



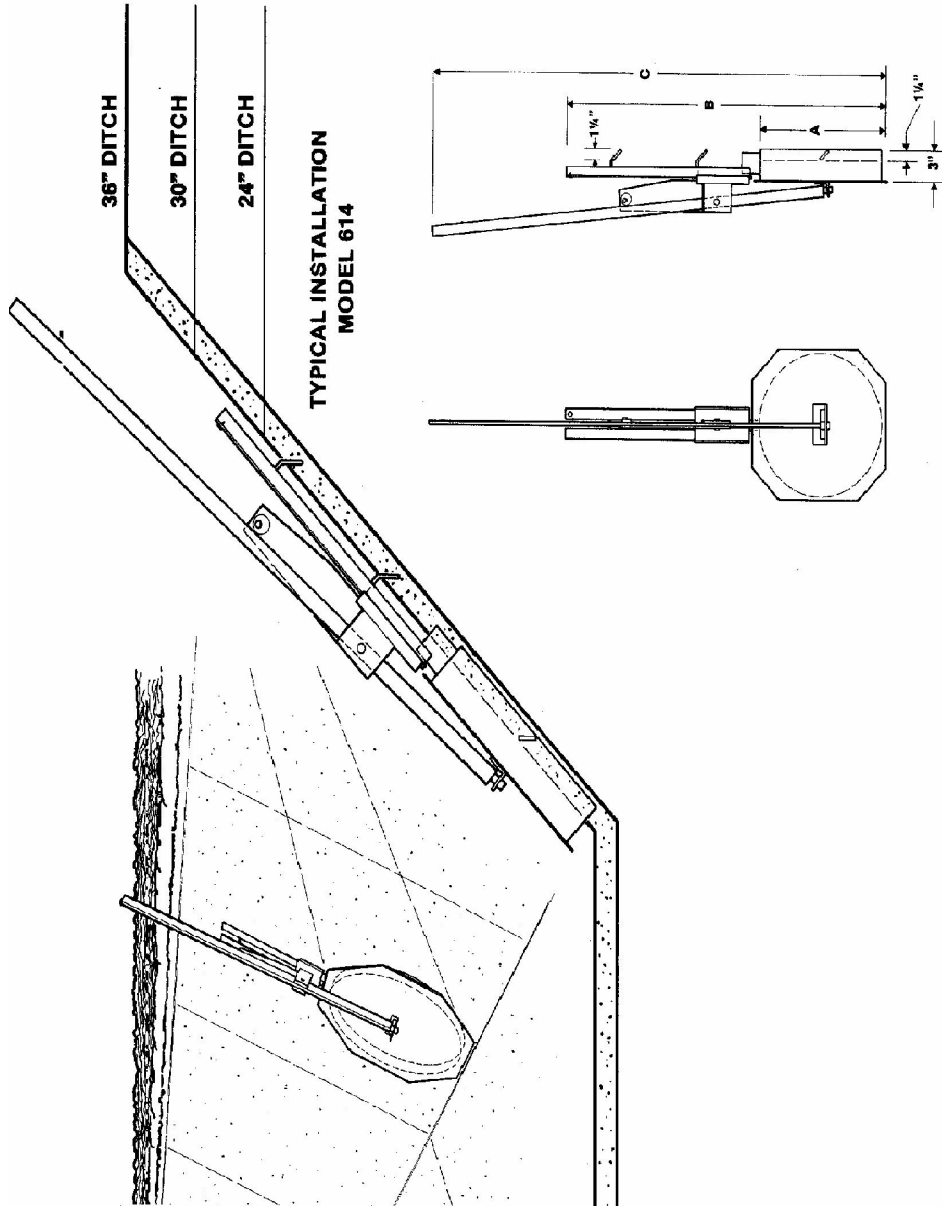
# 100 SERIES PORT VALVE



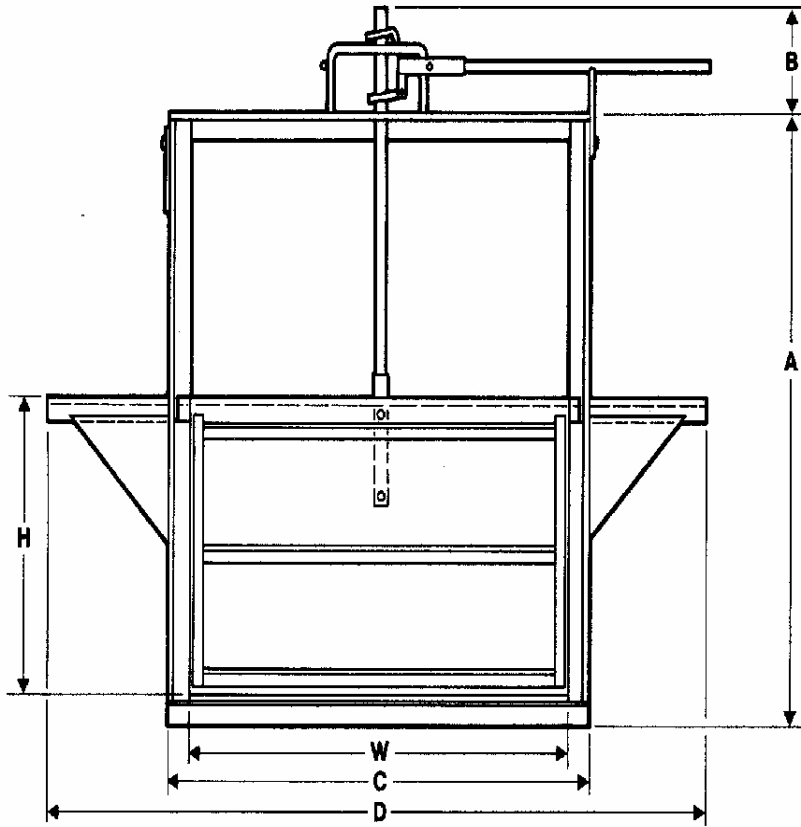
# 500 SERIES PORT VALVE



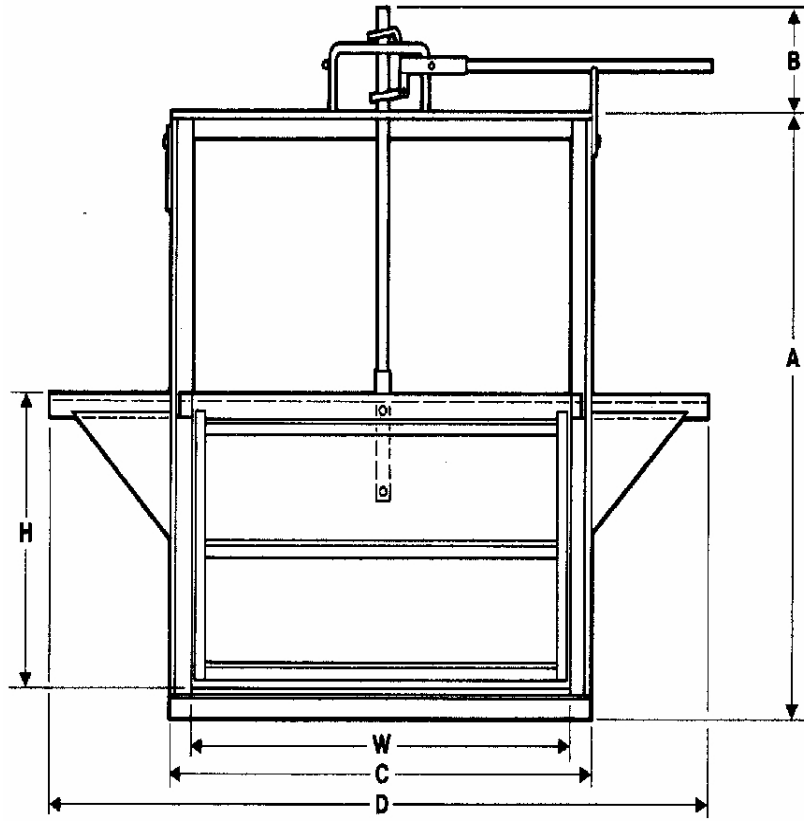
# 600 SERIES PORT VALVE



# 712 SERIES HEADGATE

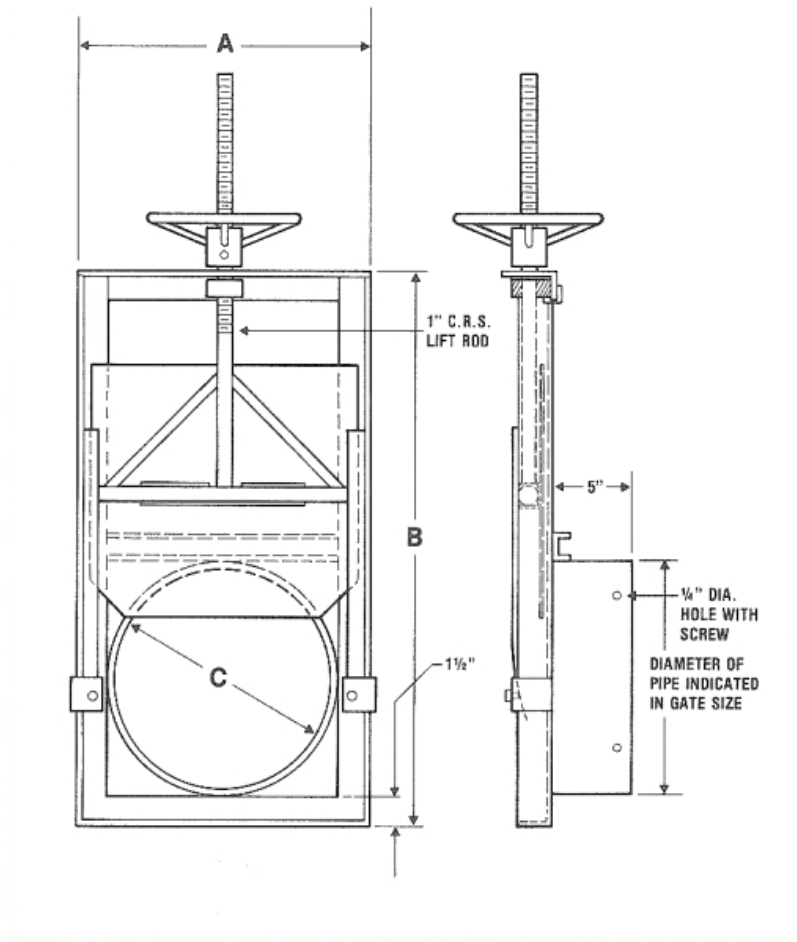


# 724 SERIES HEADGATE

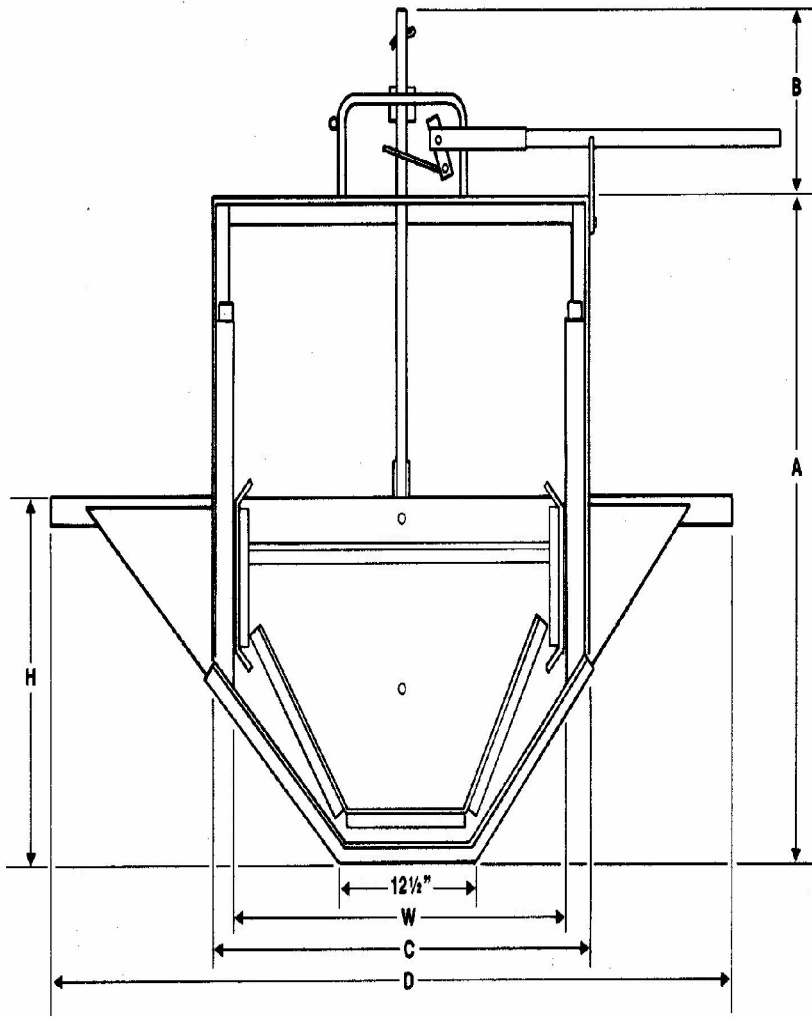




# 800 SERIES HEADGATE



# 912 SERIES HEADGATE



# 924 SERIES HEADGATE

